

R/V Savannah Safety Brief

Welcome Aboard!



Operational Mission

1. Ensure Safety of Vessel and Crew
2. Accomplish Science Objectives
3. Healthy Workplace

Pre-underway Checks

- ❖ Forms
 - Medical
 - Release and Waiver of Liability
 - Pre-board Acknowledgement and Certification
- ❖ Cabin assignments - Berthing Bill
 - Cabins 1 & 3 - Starboard Side
 - Cabins 2 & 4 - Port Side
 - Cabin changes need Captain approval
 - Keep cabin air conditioning ≥ 72 Degrees at all times

Workplace Environment

- Maintain a healthy, comfortable, and positive work place
- Alcohol is prohibited
- Illegal drugs are prohibited
- Harassment
 - Policy is Posted
 - Reporting / Chief Science or Captain

Shipboard Civility

- UNOLS Shipboard Civility and Information:

<https://www.unols.org/shipboard-civility>

- NOAA Module 1 on YouTube:

https://www.youtube.com/watch?v=6e7mGGoXRGU&feature=emb_logo

- NOAA Module 2 on YouTube:

https://www.youtube.com/watch?v=QlkuffO8vn4&feature=emb_logo

Day to Day Operations

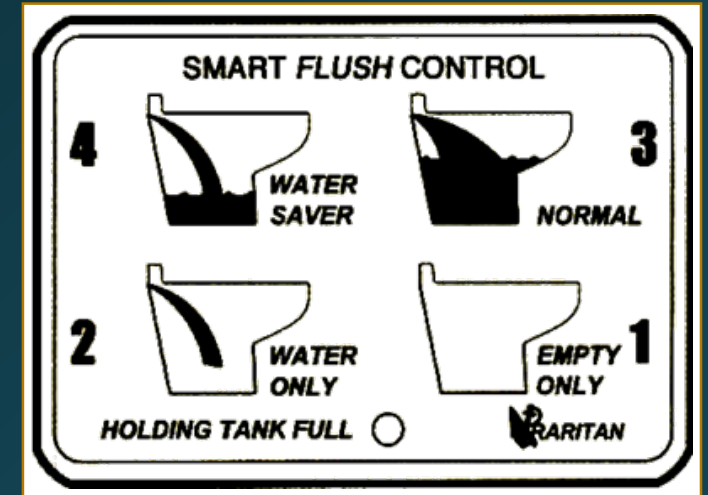
- Mess and conference
 - Mealtimes, conferencing, and relaxing
 - Keep areas clean prior to mealtimes
 - Do NOT sleep in the mess or conference room area
 - Do not leave personal items on tables when not in use
 - Keep noise to a minimum in berthing areas and when closing doors

Network Policy

- Access permission REQUIRED – see Marine Technician
- Internet service to primarily support cruise mission needs
- All network traffic monitored for use and content
- Abuse of the network will result in loss of privileges

Heads

- Toilets **DO NOT** work like shoreside toilets
- **ONLY** flush provided toilet paper
 - **ANY OTHER PRODUCT WILL BREAK or CLOG THE TOILET!**
 - Throw all paper towels, feminine products, etc.. in the trash can.
- Report any head or water ingress issues to a crew member immediately
- Leave door open when exiting



Wall mounted flush control

Sea Sickness and First Aid

- Monitor your health
- Inform crew member of any health or sea sickness symptoms
- Seasickness medicine available
- Waste bags
- Keep one on you **AT ALL TIMES** if you feel or anticipate upset seakness
- Report all accidents
- First-Aid Kits



Chemicals and Lithium Batteries

Chemicals

- Store corrosive stock in blue polyethylene chemical lockers outside.
- Store flammable stock in flammable locker on the upper deck using secondary containment.
- Do not mix acids and bases in lockers.
- Only store aliquots for planned work in fume hood. Always use secondary containment in hood.

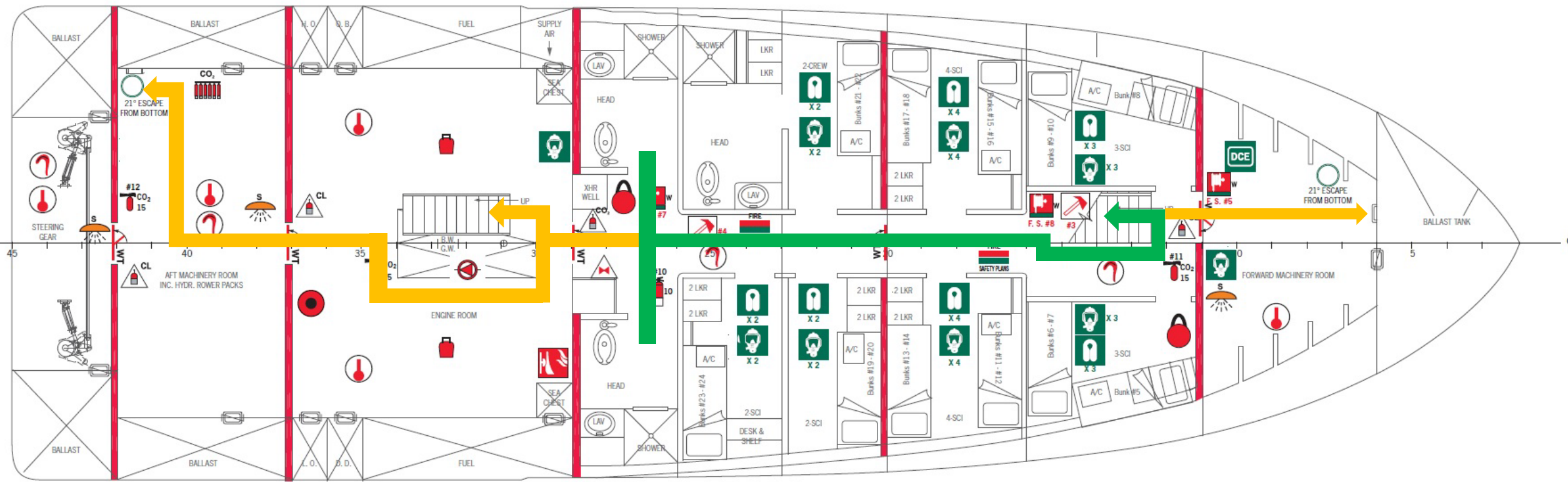
Lithium Batteries

- Inform Marine Tech if you have any science equipment with lithium batteries
- If batteries or equipment begin giving off heat or ignite, alert crew member immediately.
- Take special care when charging lithium batteries and organize personnel to watch batteries while charging
- Please refer any questions to Marine Tech

Emergency Escape Scenarios Lower Deck

Secondary Escape Route

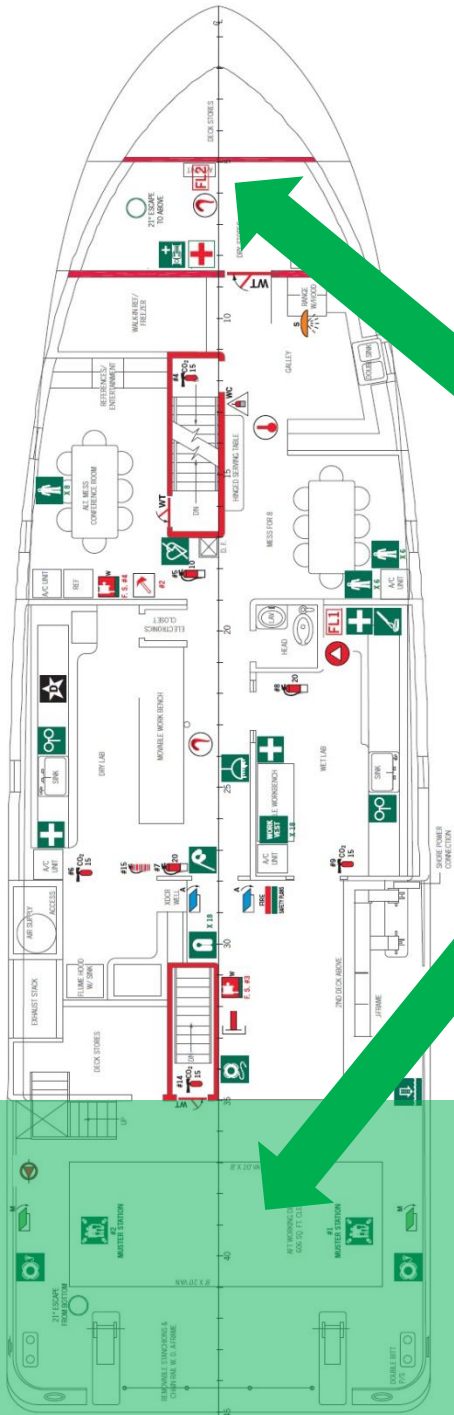
Primary Escape Route



Emergency Scenarios

Muster Plan

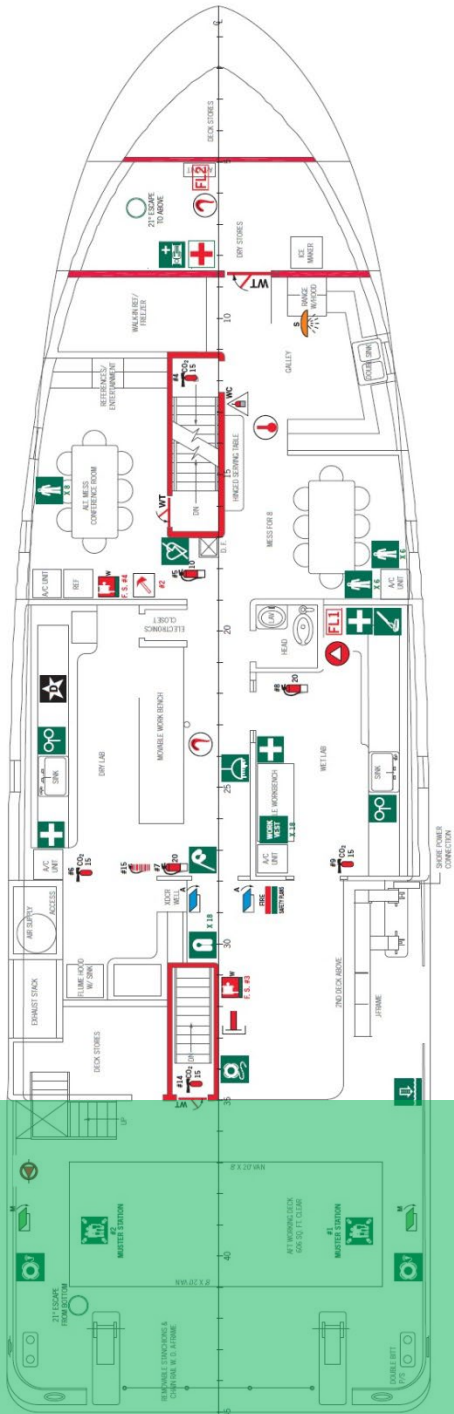
- All science crew report to Aft Main Deck Muster station in all emergency scenarios
 - Exception: Fire in the Engine Room
 - You may be directed to muster on the bow in this situation
- Report to Chief Scientist
 - Chief Scientist reports to Chief Mate or Marine Tech after science crew has mustered



Emergency Scenarios

Man Overboard

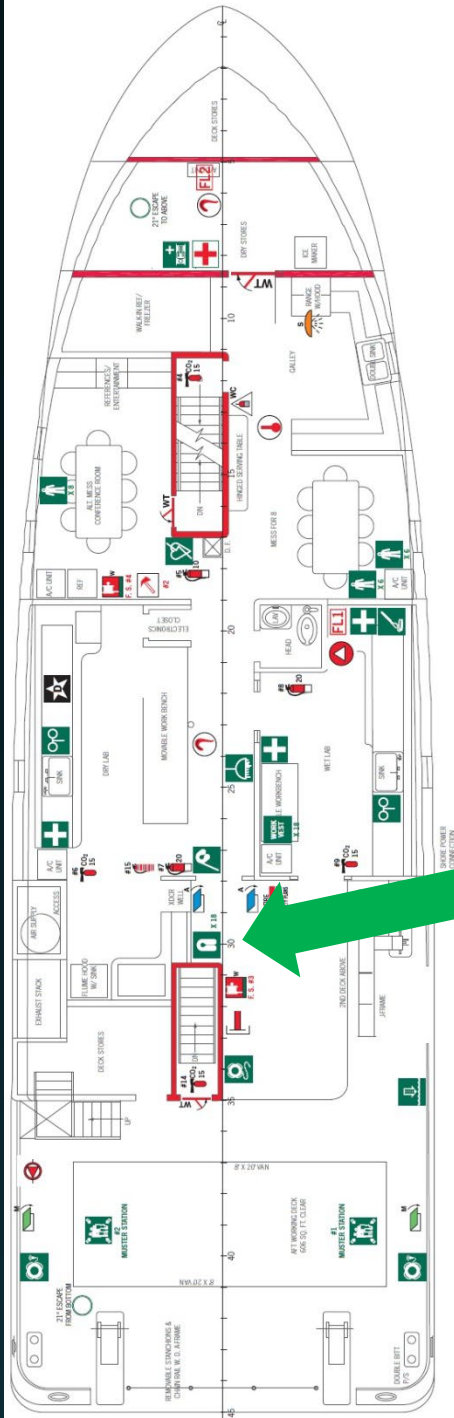
- Prevention
 - Use the buddy system when on deck (especially at night)
 - Do not sit or lean on safety chains
 - All vest have whistles, auto strobe lights and the inflatable vest have automatic Personal Locator Beacons
 - If you end up in the water, stay calm, wave arms & blow whistle
- Signal: 3 prolonged blasts of the ships whistle and general Alarm
- Yell “MAN OVERBOARD” as loud as you can
- When victim has been spotted, point with full arm extended and do not take your eyes off the victim
 - Others will throw life rings



Emergency Scenarios

Fire and Emergency

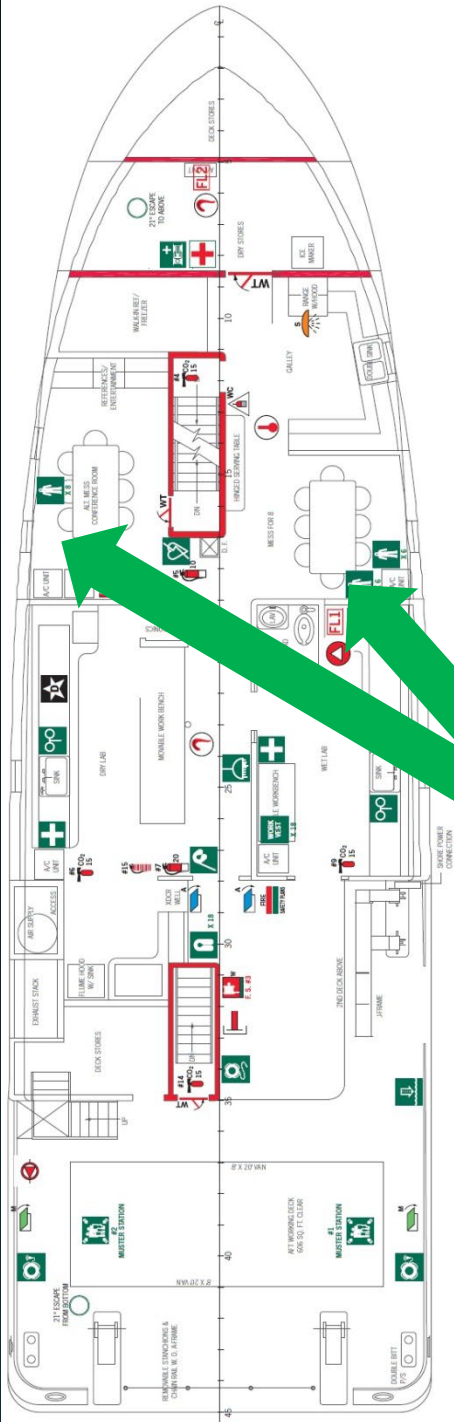
- Alert a crew member immediately
- Signal: continuous sounding of the ship's whistle and general alarm for a period of not less than 10 seconds
- Report to muster station with PFD
- PFDs located in locker outside dry lab door
- Also can be found inside your cabins
- If berthing space is full of smoke, use EEBD found in every Bunk to escape



Emergency Scenarios

Abandon Ship

- Report to muster station with PFD and immersion suit. **Do Not** jump over the side
- Immersion suits are located under mess deck and conference room benches.
- A crew member will distribute immersion suits as you are making your way to the muster station
- Life raft assignments are based on your room number



Overboard Operations

- All overboard operations need wheelhouse approval
- Required - hard hat and work vest
- **NO** open toe shoes
- **Do NOT** stand under or behind trawl wire
- Keep away from A-frame and J-frame pinch points (marked with yellow and black stripes)
- Be aware of deck lines and chains
 - **Do NOT** stand in the bight of a deck line
- Look out for one another
- Channel 6 VHF radio lab/deck to bridge



A Couple Things

- Always alert a crew member of any potential issues
- Keep watertight doors the way you found them
- Water supply is limited, be mindful of water usage
- Keep noise to a minimum

Post Cruise

- Place used linens in large canvas laundry bags under the stairs
- Wipe down all lab benches
- Check fume hood and labs for reagents or equipment
- Check refrigerators and freezers for samples